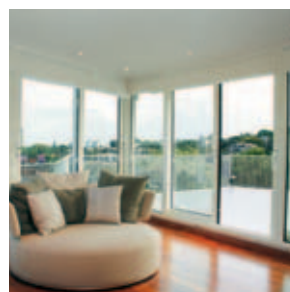
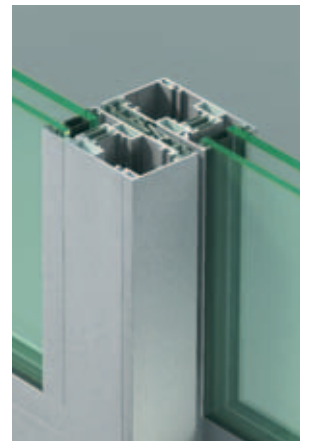
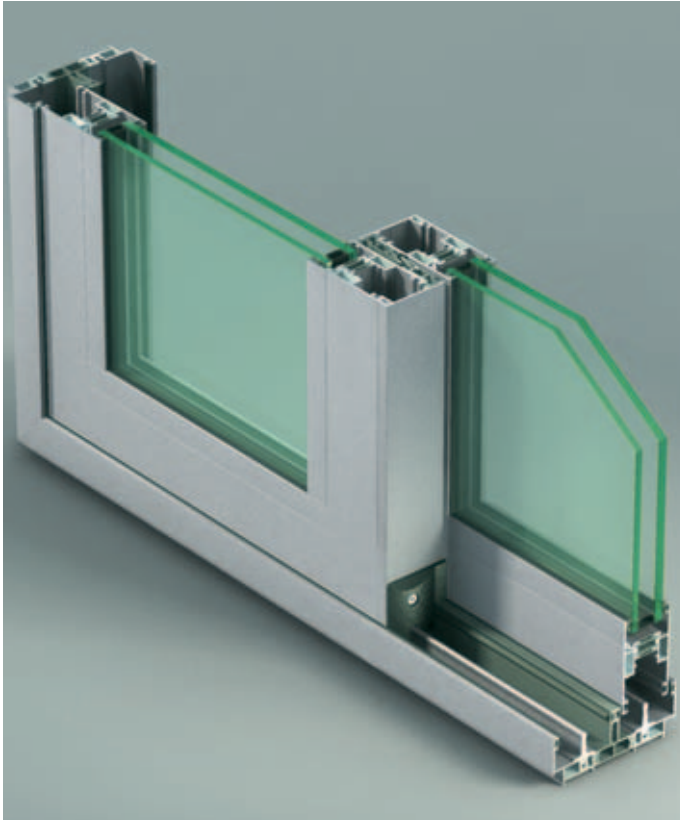


NC-S 120 SD

Sliding System



NC-S 120 SD



Features

- 6063-T6 Aluminum Alloy Frame
- Frame depth: 120 or 150 mm [4 3/4" or 6"]
- Frame assembly: 90° Corner Joint
- Sash assembly: 45° cut. Heavy Duty Corner Keys
- Dry-Glazing
- Glazing Sizes: 26 to 32 mm [1" to 1" 1/4]
- Max Sash Weight: 200 kg [440 lbs]
- Weather Stripping: Brush gaskets with fins
- Thermal Barrier: Polyamide
- Glazed in place fixed panel available
- Multi-point Lock System
- Durable Components

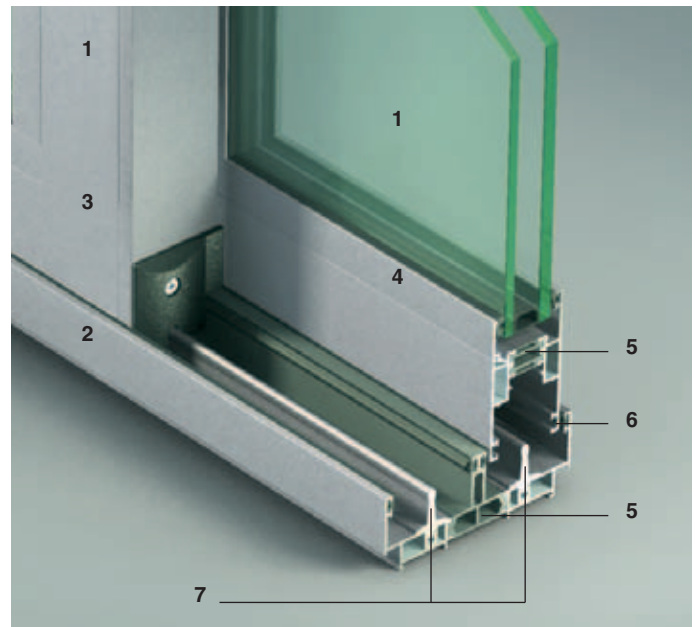
Benefits

- Quick Assembly and Ease of Installation
- Large Unobstructed Openings
- Reinforced Center Node
- Acoustic Insulation
- Thermal Insulation
- Quiet and Smooth Closing System
- Easy Maintenance

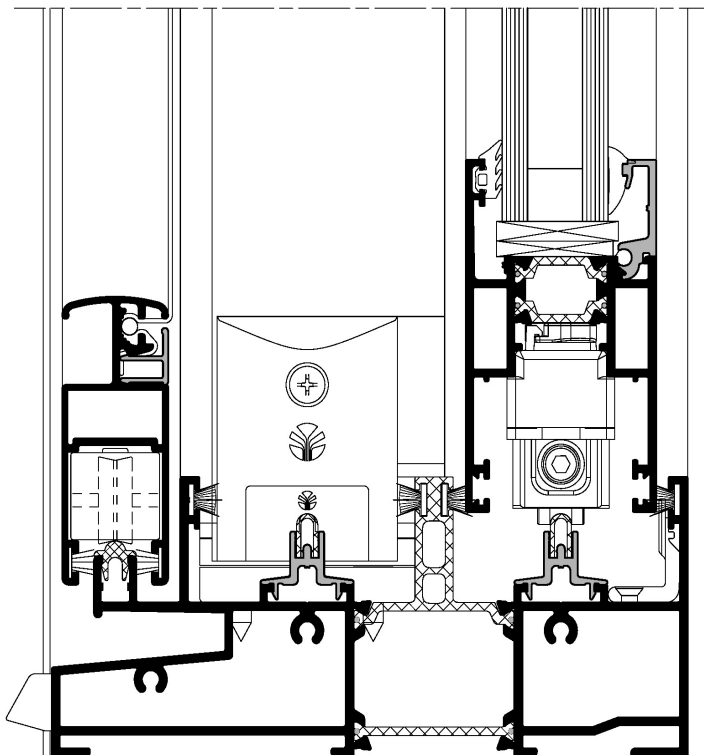
Applications

- Doors
- Windows

Technology




1. Sash
2. Frame
3. Painted or Anodized Finish
4. Glass stop
5. Polyamide Thermal Barrier
6. Weather seal brush gasket
7. Maintenance Free Sliding Tracks

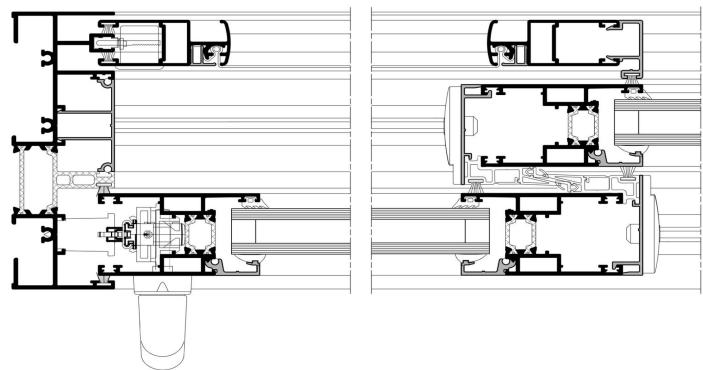
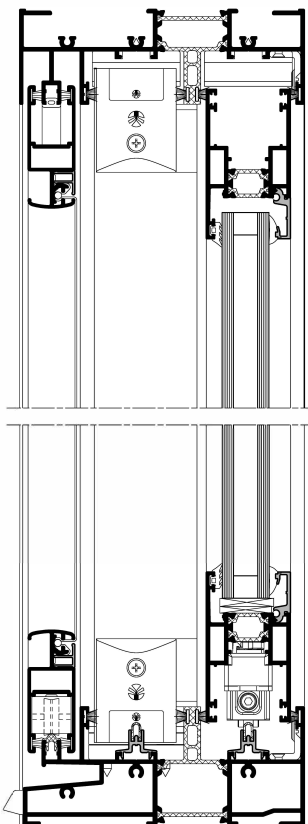


Vertical Section

Performance Data

Tested Configuration	Dimensions	AAMA / WDMA / CSA 101 / I.S.2 / A440-08	
 Sliding door	2440 x 2135 mm [96" x 84"]	Air tightness: ASTM E283 @ 75 Pa [1.57 psf]	
		infiltration: 0.37 l/s-m ² [0.07 cfm/ft ²]	exfiltration: 0.45 l/s-m ² [0.09 cfm/ft ²]
		Static water penetration: ASTM E547	
		400 Pa [8.25 psf]	
		Structural: ASTM E330	
		2160 Pa [45 psf]	

Main Sections



Dimensions

L x H @ 1440 Pa [30 psf]:

- 2 Sashes with Standard Interlock:
 - 2440 x 2135 mm [96" x 84"]
- 4 Sashes with Standard Interlock:
 - 4880 x 2135 mm [192" x 84"]

Glazing Options

Glass Sizes Ranging, from 26 [1"] to 32 mm [1 1/4"]
Different configurations can be evaluated with our Engineering Team

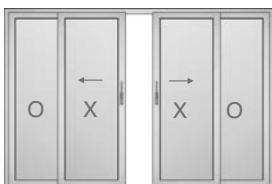
Configurations



1 sash + fixed



2 sashes



2 sashes + 2 fixed



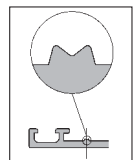
4 sashes on 2 Tracks

Quality

METRA stands for quality and optimal performance.

Only original METRA profiles and accessories can certify the highest performance.

Original METRA products have an "M" mark on the interior surface.



METRA quality is certified by ISO 9001.

METRA controls the entire process of production for the extrusions.

Manufacturing and installation of final products are performed through a network of independent specialists.





METRA Systems
1995 Industrial Blvd. - Laval, QC H7S 1P6, Canada
Tel. +1 450 629 4260 - Fax +1 450 629 7313
info@metrasystem.com
www.metrasystem.com



METRA
METRA S.p.A.
Via Stacca, 1 - 25050 Rodengo Saiano (BS) Italy
Tel. +39 030 6819.1 - Fax +39 030 6819 990
metra@metra.it
www.metra.eu

METRA prints on ecologically friendly paper
and uses printing products with low
environmental impact.



METRA Products

Architectural Envelope

Entrances & Windows

Special Systems

Sliding Systems

Accessories

Printed in June 2016